

# JUXTA W Series Model : WA0A

## General Specifications

### Output Isolator

JUXTA

## 1. GENERAL

This isolator converts 1~5V DC signals to 4~20mA DC or 10~50mA DC current signals.

## 2. SPECIFICATIONS

IO Specifications	
Input signal	1~5V DC
Input resistance	1M $\Omega$ (100k $\Omega$ when power off)
Permissible applied voltage	$\pm$ 30V DC max
Output signal	Current signal
Zero point adjustment range	$\pm$ 3% of span
Span adjustment range	$\pm$ 5% of span
Standard performance	
Precision rating	$\pm$ 0.1% of span
Response speed	150ms 63% response (10~90%)
Insulation resistance	100M $\Omega$ min (at 500V DC) between input~output~power supply (DC drive) input~output~power supply~ground (AC drive)
Voltage withstand	1500V AC/minute between input~output, input~power supply 500V AC/minute between output~power supply (DC drive) 1500V AC/minute between input~output~power supply~ground (AC drive)
Ambient temperature and humidity	Normal operating condition: 0~50°C, 5~90% RH Operating limit: -10~60°C, 5~95% RH Storage condition: -40~70°C, 5~95% RH (No condensation)
Power supply voltage	85~264V AC 47~63Hz, 24V DC $\pm$ 10%
Effect of power supply voltage fluctuation	$\pm$ 0.1% max of span per 85~264V AC or 24V DC $\pm$ 10% fluctuation
Effect of change in ambient temperature	$\pm$ 0.2% max of span per 10°C change in temperature
Current dissipation	24V DC 85mA (WA0A-1)
Power dissipation	100V AC 9VA (WA0A-2)
Mountings and dimensions	
Material	Case: ABS plastic
Boards	Both sides glass-epoxy
Mounting methods	Rack, wall, or DIN rail
Connection method	M4-screw terminals
External dimensions	72 x 48 x 127 mm (h x w x d)
Weight	DC drive: approx. 150g, AC drive : approx. 300g
Accessories	
Tag number labels:	1
Mounting blocks:	2
M4 mounting screws:	4

WA0A-6□-□\*B

TYPE NO.

OUTPUT SPECIFICATION

A: Current

INPUT SIGNAL

6: 1~5V DC

OUTPUT SIGNAL

A: 4~20mA DC

H: 10~50mA DC

Z: (custom) current signal

(where 100% is 50mA max and zero elevation is 25% of span)

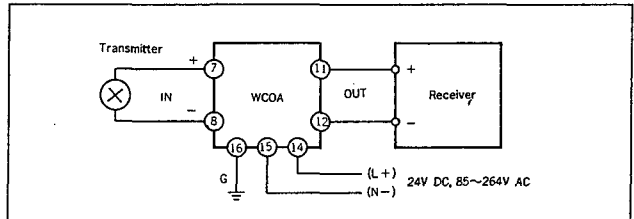
POWER SUPPLY

1: 24V DC±10% 2: 85~264V AC

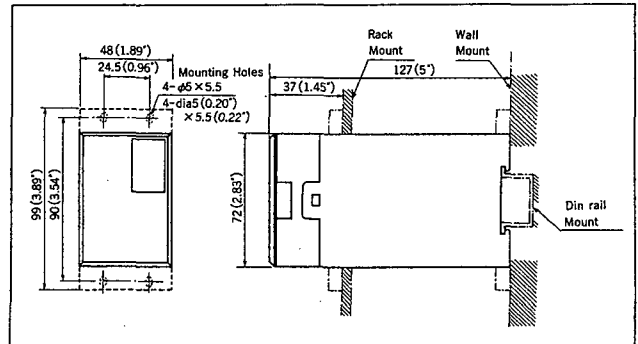
**High Voltage Withstand Specifications**

The JUXTA W Series is also available in 2000V AC voltage withstand specifications. Contact your dealer for details.

**WIRING DIAGRAM**



**EXTERNAL DIMENSION**



**OUTPUT RESISTANCE AND PERMISSIBLE LOAD RESISTANCE**

WA0A (DC Current Output)		
Output Signal	Output Resistance	Permissible Load Resistance
4~20mA DC	5MΩ min	0~750Ω
10~50mA DC		0~220Ω

Subject to change without notice for grade up quality and performance